



DECCAN EDUCATION SOCIETY'S
INSTITUTE OF MANAGEMENT DEVELOPMENT
AND RESEARCH (IMDR®), PUNE



NURTURING RELATEDNESS WITH THE WORLD

Admission Brochure 24-26

PGDM

Approved By AICTE
NBA - Accredited
MBA equivalence by AIU

GLORIOUS 139 YEARS OF DECCAN EDUCATION SOCIETY



VISHNUSHASTRI
CHIPLUNKAR



LOKMANYA BAL
GANGADHAR TILAK



GOPAL GANESH
AGARKAR



MAHADEV BALLAL
NAMJOSHI



VAMAN SHIVRAM
APTE



RAJARSHI SHAHU
MAHARAJ

The Deccan Education Society (DES), established on October 24, 1884, in Pune, Maharashtra, holds a significant position in India's educational history. Over its impressive 139-year journey, DES, founded by visionary leaders like Lokmanya Bal Gangadhar Tilak, Shri. Gopal Agarkar, Shri. Vishnushastri Chiplunkar, Shri. Mahadev Namjoshi and Shri. Vaman Apte. In the 21st century, as India progresses, the legacy of the Deccan Education Society continues to inspire and guide future generations in their pursuit of knowledge, enlightenment, and societal progress.



IMDR®- The Institute of Management Development and Research, established in 1974 in Pune, stands as a pioneering institution in Management Education. Approved by the All India Council of Technical Education (AICTE) and the Directorate of Technical Education (DTE), Maharashtra, IMDR® offers a comprehensive two-year full-time Post Graduate Diploma in Management (PGDM). Committed to fostering sustainable growth in work organizations, IMDR® adheres to the best management practices. The institute's focus on the all-round development of students aims to produce thoughtful and sensitive professionals who are valuable assets to industry partners and contribute positively to society at large



APPROVED



ACCREDITED



MBA EQUIVALENCE

IMDR® A LEGACY OF 50 YEARS



The Institute of Management Development and Research (IMDR) has a rich legacy of 50 years in the field of management education. Throughout its 50-year legacy, IMDR® has nurtured generations of business leaders, contributed to management research, and built strong ties with industry and academia. The institute continues to evolve, adapt to changing business landscapes, and prepare future managers to meet the challenges of a dynamic world.

VISION

Create a value-based ecosystem of knowledge where individuals explore their creative potential, through productive learning processes, leading to meaningful connections with the external world.

MISSION

We foster management education that -

- Encourages integrative research through innovative practices
- Assimilates dynamics of the industry for collaborative exchanges
- Synergizes Indian values for ethical and sustainable development

Why IMDR® ?



FIRST B-SCHOOL IN PUNE SINCE 1974



EMBEDDED SIX-MONTH INTERNSHIP



DUAL SPECIALIZATION



SELF-DRIVEN LEARNING SYSTEM



INDUSTRY RELEVANT CERTIFICATIONS



AMETHYST: ALUMNI MENTORING PROGRAM



BEST RETURN ON INVESTMENT



CENTRALLY LOCATED



THE BOUTIQUE INSTITUTE: INDIVIDUALIZED MANAGEMENT EDUCATION

DUAL SPECIALIZATION OFFERED



MARKETING



FINANCE



HUMAN RESOURCE



SUPPLY CHAIN & OPERATIONS



BUSINESS ANALYTICS



INTERNATIONAL TRADE



ENTREPRENEURSHIP & START-UP MANAGEMENT



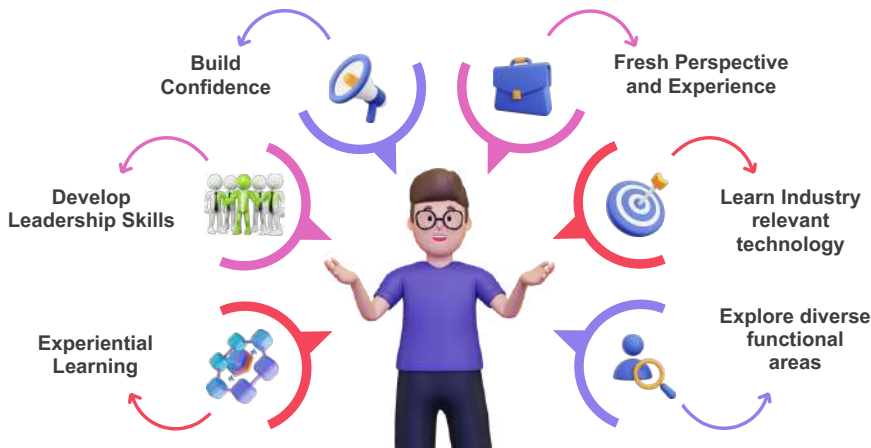
AGRI - BUSINESS MANAGEMENT



BUSINESS TECHNOLOGY & SYSTEM

EXPERIENTIAL LEARNING: SIX-MONTH INTERNSHIP

Internship Perks



CAREER ENHANCEMENT COURSES



PLACEMENT STATISTICS BATCH - 2021-23



TOTAL PERCENTAGE OF PLACED STUDENTS



HIGHEST PACKAGE



MODAL PACKAGE



AVERAGE PACKAGE

AVERAGE OPPORTUNITIES PER STUDENT: 12

OUR RECRUITERS





ADMISSION CRITERIA

APPLICATION
FORM

PERSONAL
INTERVIEW

SELECTION
LETTER

ELIGIBILITY CRITERIA:

Graduates from any discipline with or without work experience with not less than 50% marks at graduation (45% for SC/ST candidates).

ENTRANCE SCORE ACCEPTED:

CAT, MH-CET, CMAT, XAT, MAT, ATMA, & GMAT

Final year graduate students are eligible, those who will fulfill these criteria.



SCAN TO APPLY



DECCAN EDUCATION SOCIETY'S
INSTITUTE OF MANAGEMENT DEVELOPMENT AND RESEARCH (IMDR®), PUNE
DES CAMPUS, AGARKAR ROAD, DECCAN GYMKHANA, PUNE - 411 004

www.imdr.edu, admissions@imdr.edu

+91 9225340984, +91 6359252520, 020 67656117/04